



# DIVERSIFIED UTILITY SERVICES, INC.

Diversified is a WMBE owned company that was founded in 1997 and was recently recognized by Engineering News and Review as the 10<sup>th</sup> in the nation for electrical specialty contractor for 2008.

Diversified has extensive experience with overhead and underground construction including switchyard and substation construction to 500kV.

Construction forces are fielded through the IBEW locals in the 12 western states, allowing us to provide manpower resources in the various areas we serve.

Diversified's goal is to meet our client's needs in an expeditious, safe and cost effective manner. Our company has never missed a client's "ready date", nor have we had a final settlement of contract by litigation or arbitration.

Diversified Utility Services, Inc. along with its affiliated companies, can provide a wide array of services including: building damage assessment and restoration, noise and mold remediation and construction. We can also provide project management for general construction.

Our services are being expanded to include electrical infrastructure for all facets of renewable energy projects. We are members of the Geothermal Energy Association, American Wind Energy Association, and Solar Energy Power Association.



## Our Electrical Utility Services Include:

### Distribution

- Underground Installation and Conversion
- Applicant Installed Inspections
- Distribution Helicopter/Ground Patrol
- Deteriorated Pole Replacement
- Fiberglass Pole Installation
- Underground cable silicon injection
- Overhead / Underground Maintenance
- Emergency Circuit Restoration
- Distribution Switch Automation
- Planning / Engineering
- Fiber optics installation
- Smart Meter Network Installation
- Infrared Surveys

### Hydro

- Automation - Engineering and Design

### Renewable Energy Projects

- Electrical Infrastructure and interconnect

### Transmission

- Construction / Maintenance up to 230kv
- Helicopter/Ground Patrol & IR
- Underground Cable Installations
- Substation Interconnections
- Transmission Switch Automation
- EPC Services

### Substation

- New Construction/Expansion up to 500kv
- Substructures

Building  
Relationships  
Through



- INTEGRITY •
- QUALITY •
- SAFETY •





## **Our Current Client Base**

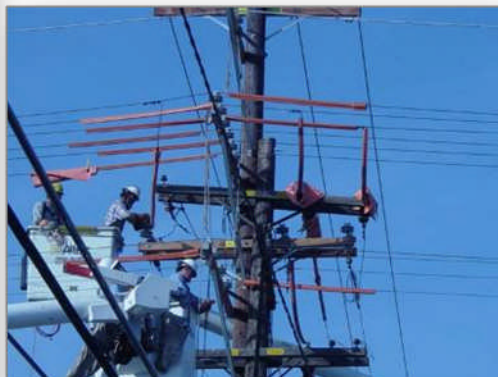
- Southern California Edison
- San Diego Gas & Electric
- Pacific Gas & Electric
- City of Anaheim, CA
- City of Riverside, CA
- Western Area Power Adm.
- Enco Utility Services
- PacifiCorp
- Kauai's Island Utility Cooperative
- Nevada Energy
- Sacramento Municipal Utility District

## **State Contractor Licenses**

- **California** (WMBE Contractor)  
Class A, B & C-10
- **Arizona**  
Class A-17
- **Idaho**  
RCE 24294
- **Nevada**  
Class A-17  
Class C2E
- **Oregon**  
General
- **Utah**  
License #6645943-5551  
Class E100
- **Washington**  
General Contractor
- **Wyoming**

## **Bonding and Insurance**

- .70 Workers Compensation  
Experience Modification Rate
- \$250m aggregate Bonding Capacity  
through Safeco Surety



## **Diversified Utility Services, Inc.**

3105 Unicorn Rd  
Bakersfield, California  
Mailing Address  
P.O. Box 80417  
Bakersfield, CA 93380  
Phone (661) 325-3212  
Fax (661) 325-3340



## **Key Contacts:**

Steve Hill  
Manager of Business Development  
(661) 331-4536  
Email: [steveh@dusi1.com](mailto:steveh@dusi1.com)

Keith Kaeser  
Planning Manager  
(661) 331-4534  
Email: [keithk@dusi1.com](mailto:keithk@dusi1.com)



[www.diversifiedutilityservices.com](http://www.diversifiedutilityservices.com)